

# Register Assembly @ WSTsb IP68 (Bayonet)

---



WSTsb



WSTsb IP 68



# 1. Parts list

20922309	Register housing ARAD	70220-081503	WSTSB BYO REGISTER HOUSING
25825509	Bayonet shroud drilled IP68	70220-081500	WSTSB BYO COVER DRILLED IP168
26602709	Stopper pin PPS	70220-008568	STOPPER PIN PPS
90601239	Reed switch housing 1.5m IP68 w/ARAD lid	70220-081501	WSTSB BYO REED SWITCH HOUSING 1.5m IP68 W/LID



20922309



26602709



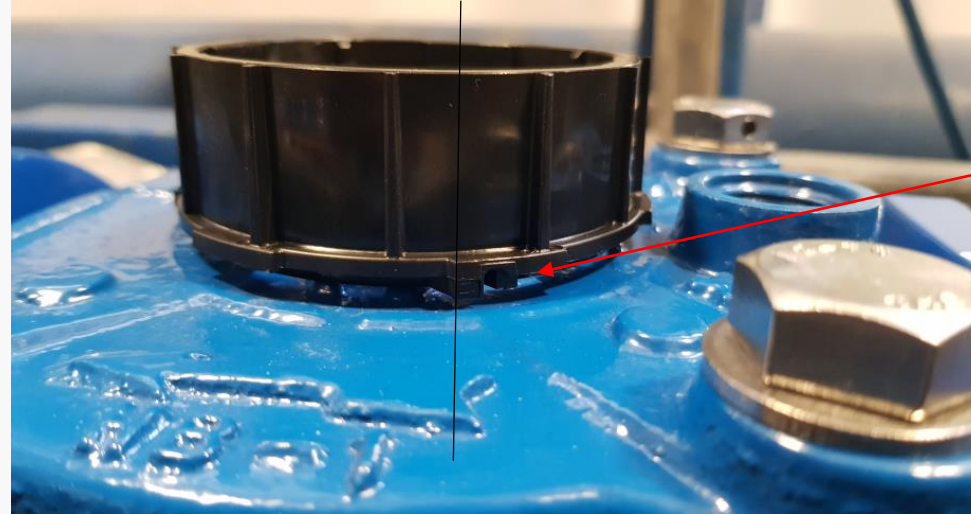
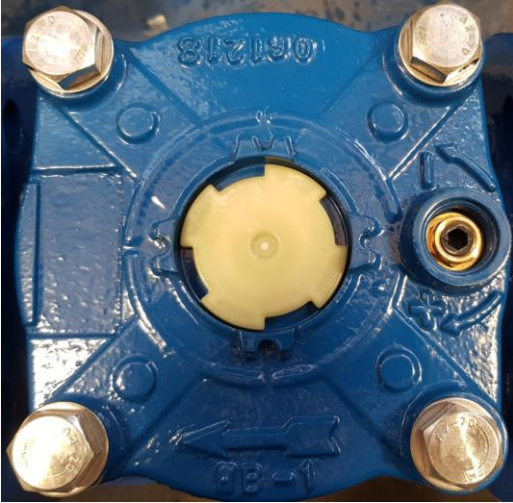
25825509



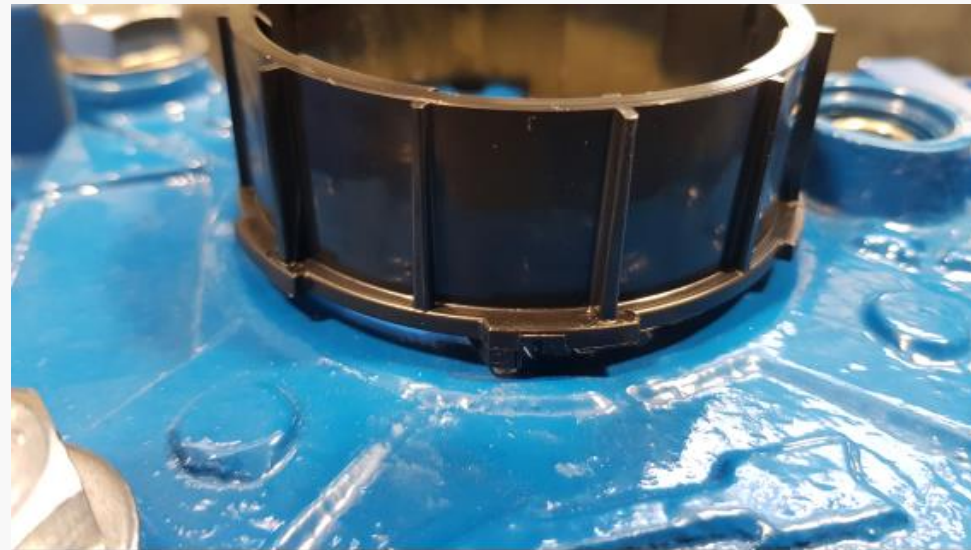
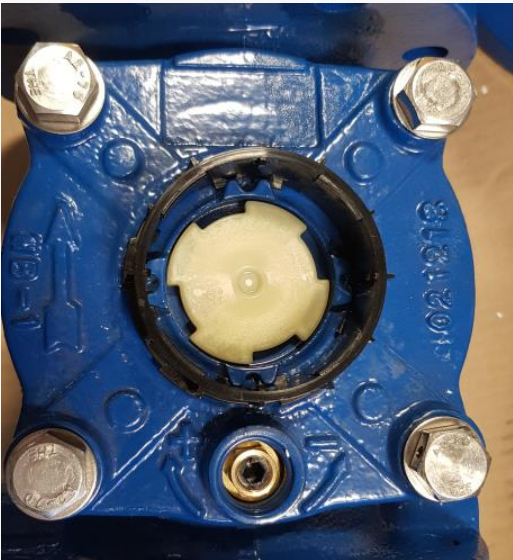
90601239



# 1. Placing The Register Housing



Stopper pin hole  
Location before turning left



## 2. Placing The Register

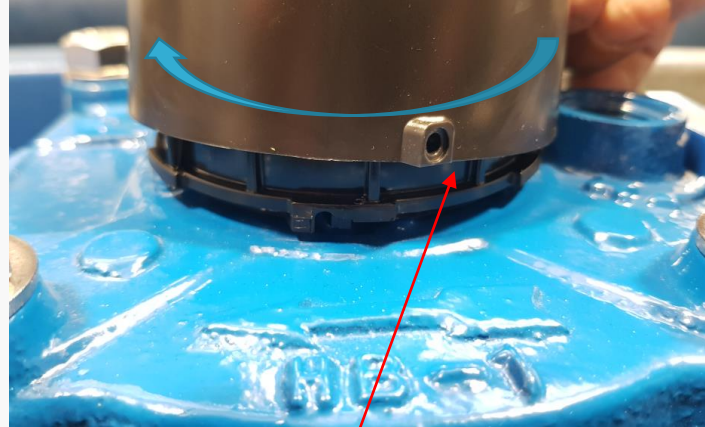
Register direction must be kept



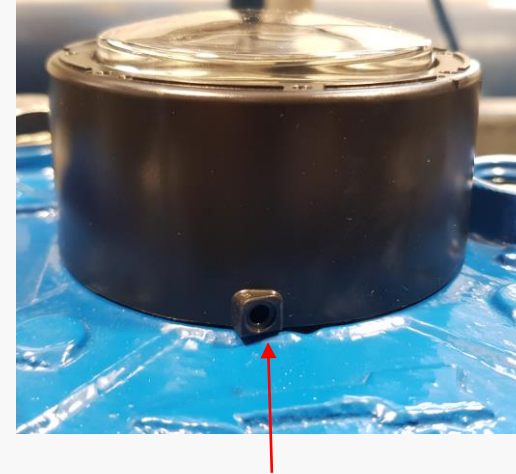
Register direction must be kept



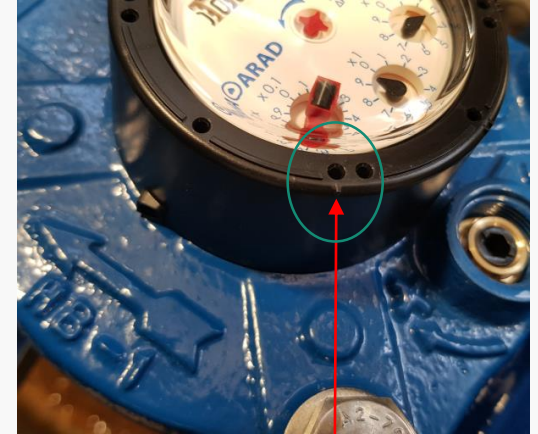
### 3. Placing The Shroud



Stopper pin hole  
Location before turning left



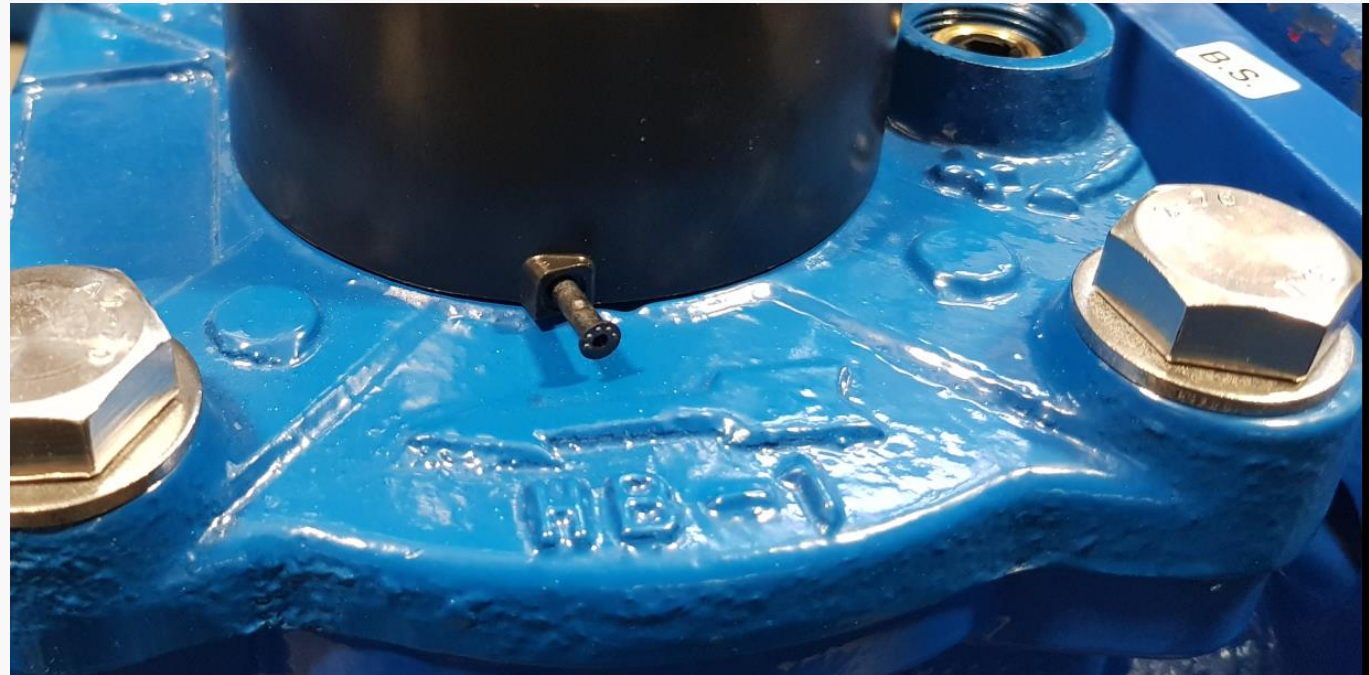
Stopper pin hole  
final location



Reed switch location

## 4. Placing The Stopper Pin

---



## 5. Placing The Reed Switch



The reed switch can be mounted in one of 3 positions according to the magnet location in the register

1



2

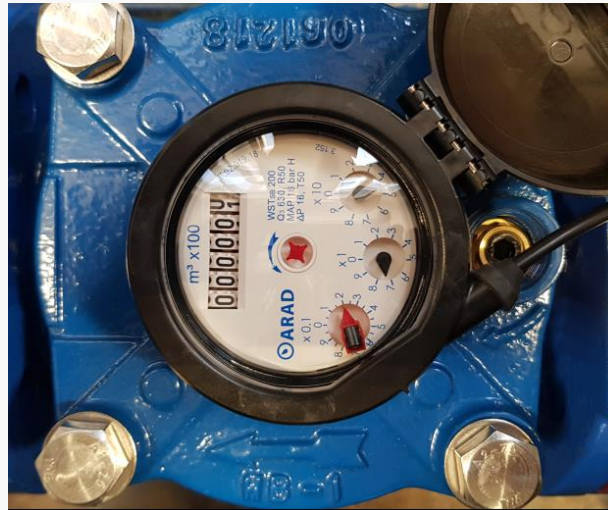
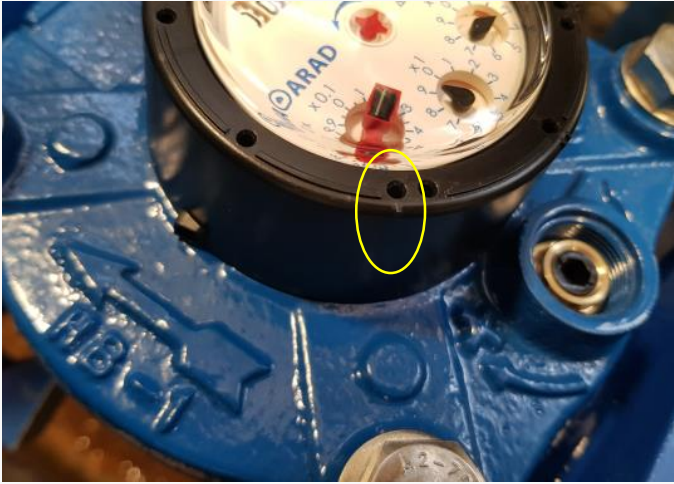


3

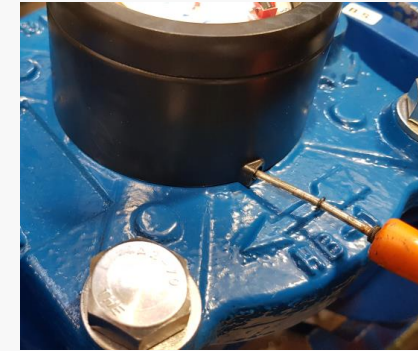
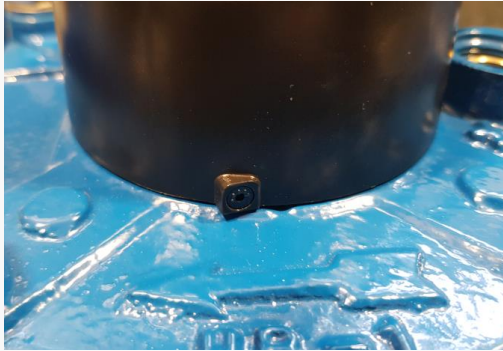




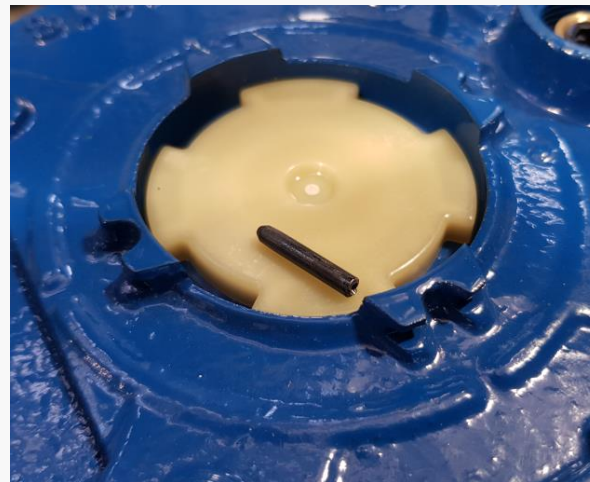
## 5. Placing The Reed Switch



# Disassemble Register



Hit the stopper pin and push it inside while breaking the head of the pin  
After getting rid of the pin, turn the shroud counterclockwise







THANK  
YOU!